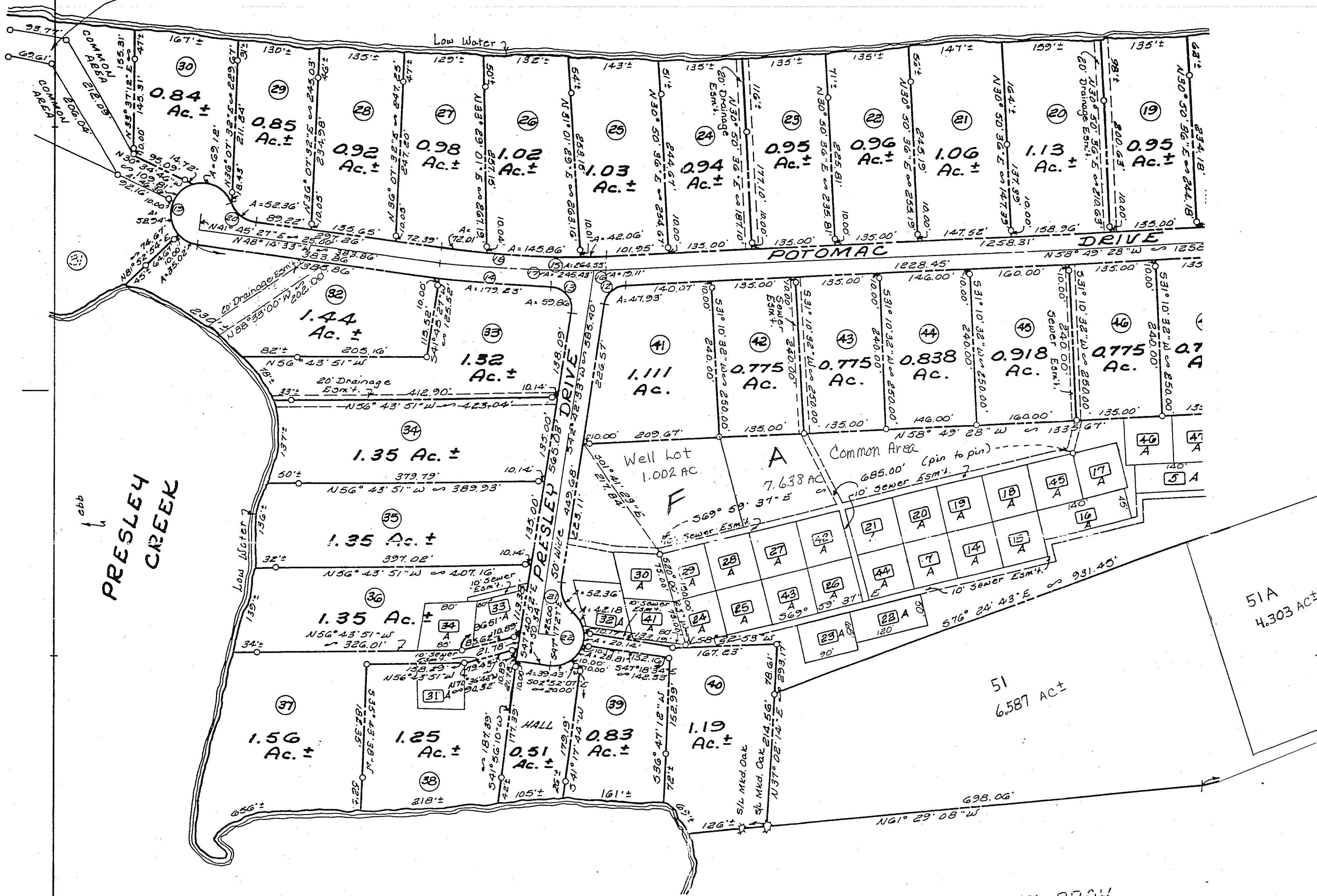


NORTHUMBERLAND COUNTY

POTOMAC RIVER

Access Road to Common Area,  
Easement Area & Lot 52.



PRESLEY CREEK

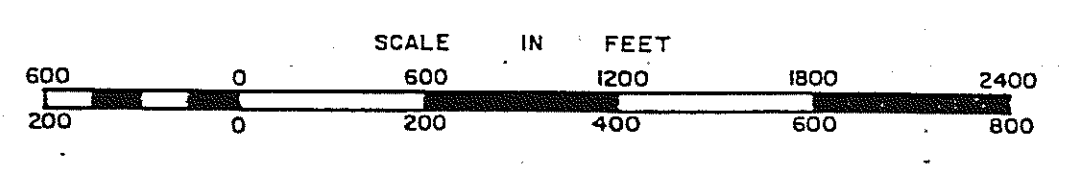
POTOMAC BAY ESTATES

HEATHSVILLE MAGISTERIAL DISTRICT  
NORTHUMBERLAND COUNTY, VIRGINIA

Dimension of remote drainfields - all are 75' x 75'  
unless otherwise dimensioned.

A 15' Utility and Sewer Easement is adjacent all roads  
and a 30' Easement straddles each side line and back line  
unless back line is on water.

PAGE 1



DISTRICT

SECTION 12A  
INSERT